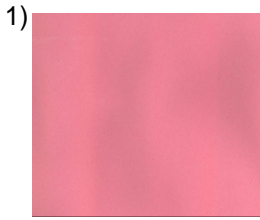


Name: \_\_\_\_\_

Date: \_\_\_\_\_

**Spelling Quiz for Category: colors**

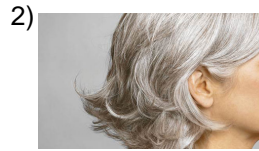
Order all the letters and fill in the blank with the corrected word.



pink

**rodosa**

\_\_\_\_\_



to become grey

**grirseá**

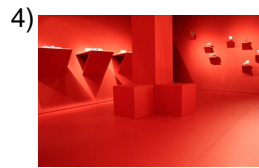
\_\_\_\_\_



light yellow

**mloial áldoarip**

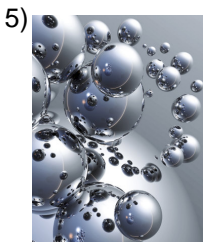
\_\_\_\_\_



red

**eannacrdo**

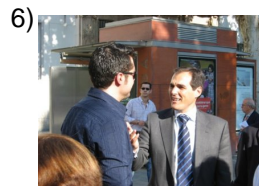
\_\_\_\_\_



silver

**tleopaad**

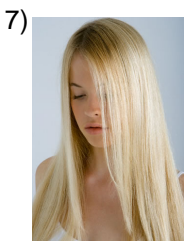
\_\_\_\_\_



tenuous

**nuete**

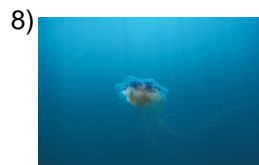
\_\_\_\_\_



brown (hair)

**actñaacf é,so**

\_\_\_\_\_



cyan

**cain**

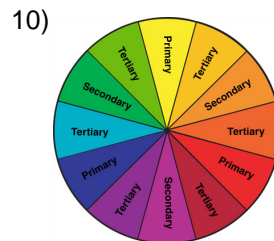
\_\_\_\_\_



dark (m)

**rcoosu**

\_\_\_\_\_



maintains color

**ci orfolrme**

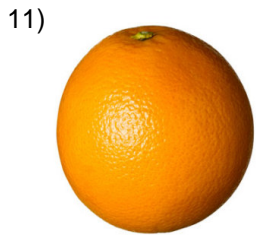
\_\_\_\_\_

Name: \_\_\_\_\_

Date: \_\_\_\_\_

**(continued) Spelling Quiz for Category: colors**

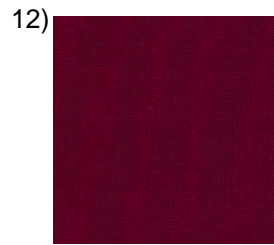
Order all the letters and fill in the blank with the corrected word.



orange

**arananj**

\_\_\_\_\_



burgundy

**obrdo**

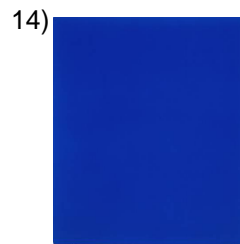
\_\_\_\_\_



pink

**radosa**

\_\_\_\_\_



blue

**aulz**

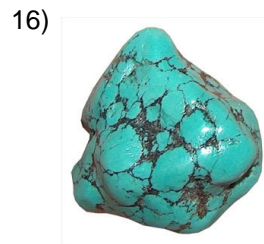
\_\_\_\_\_



violet

**veatiol**

\_\_\_\_\_



turquoise

**qatesuru**

\_\_\_\_\_



quiet (color)

**riosob**

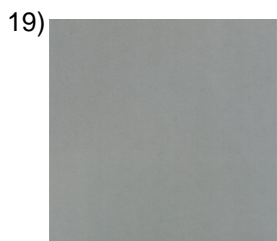
\_\_\_\_\_



yellow

**mrllaaio**

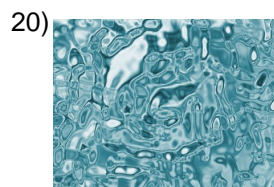
\_\_\_\_\_



gray

**grsi**

\_\_\_\_\_



light, clear

**aolrc**

\_\_\_\_\_

Name: \_\_\_\_\_

Date: \_\_\_\_\_

**(continued) Spelling Quiz for Category: colors**

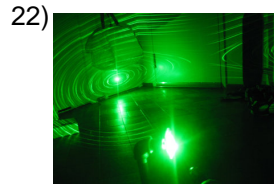
Order all the letters and fill in the blank with the corrected word.



gaudy, screaming  
colors

**illonechs**

\_\_\_\_\_



green

**rdvee**

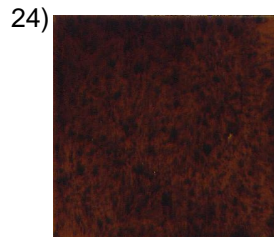
\_\_\_\_\_



light blue

**eltcsee**

\_\_\_\_\_



brown

**arrómn**

\_\_\_\_\_



colors

**rcoles**

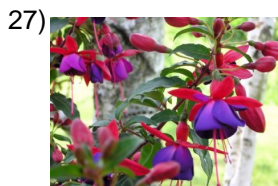
\_\_\_\_\_



black

**nerog**

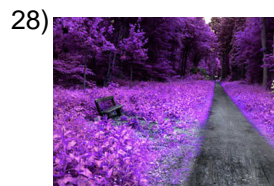
\_\_\_\_\_



fuchsia

**ifusac**

\_\_\_\_\_



purple

**modrao**

\_\_\_\_\_



grey

**rgis**

\_\_\_\_\_



white

**anoblc**

\_\_\_\_\_

Name: \_\_\_\_\_

Date: \_\_\_\_\_

**(continued) Spelling Quiz for Category: colors**

Order all the letters and fill in the blank with the corrected word.

31)



colorful

lidcooro

\_\_\_\_\_

32)



lavander, lilac

lial

\_\_\_\_\_

Name: \_\_\_\_\_

Date: \_\_\_\_\_

### **Answer Key for Worksheet 3f9e2**

#### *Spelling Quiz starting on page 1*

1 = rosado , 2 = grisear , 3 = amarillo pálido , 4 = encarnado , 5 = plateado , 6 = tenue , 7 = café, castaño , 8 = cian , 9 = oscuro , 10 = color firme , 11 = naranja , 12 = bordo , 13 = rosada , 14 = azul , 15 = violeta , 16 = turquesa , 17 = sobrio , 18 = amarillo , 19 = gris , 20 = claro , 21 = chillones , 22 = verde , 23 = celeste , 24 = marrón , 25 = colores , 26 = negro , 27 = fucsia , 28 = morado , 29 = gris , 30 = blanco , 31 = colorido , 32 = lila